

PAMELA

GLE 70 – 13 12 2006

Flare 2006 12 13
X3.4, S06W35,
start 02:14

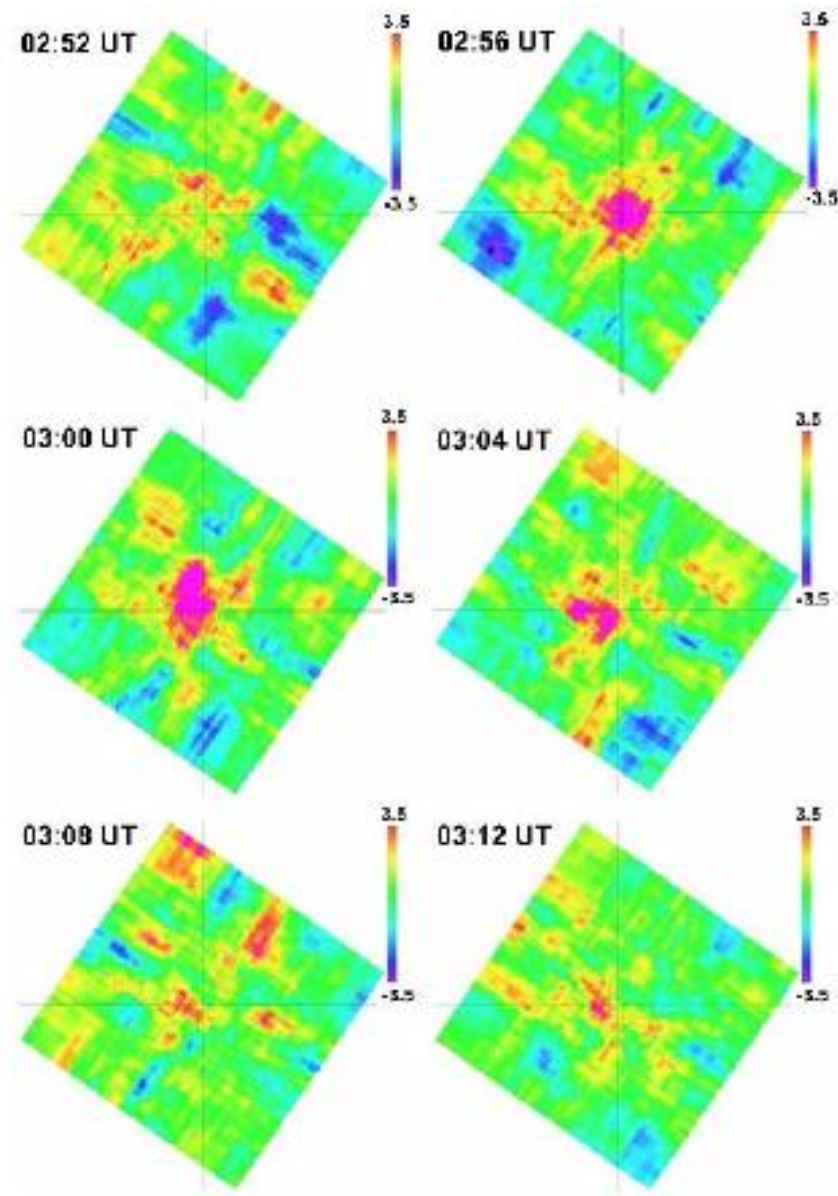
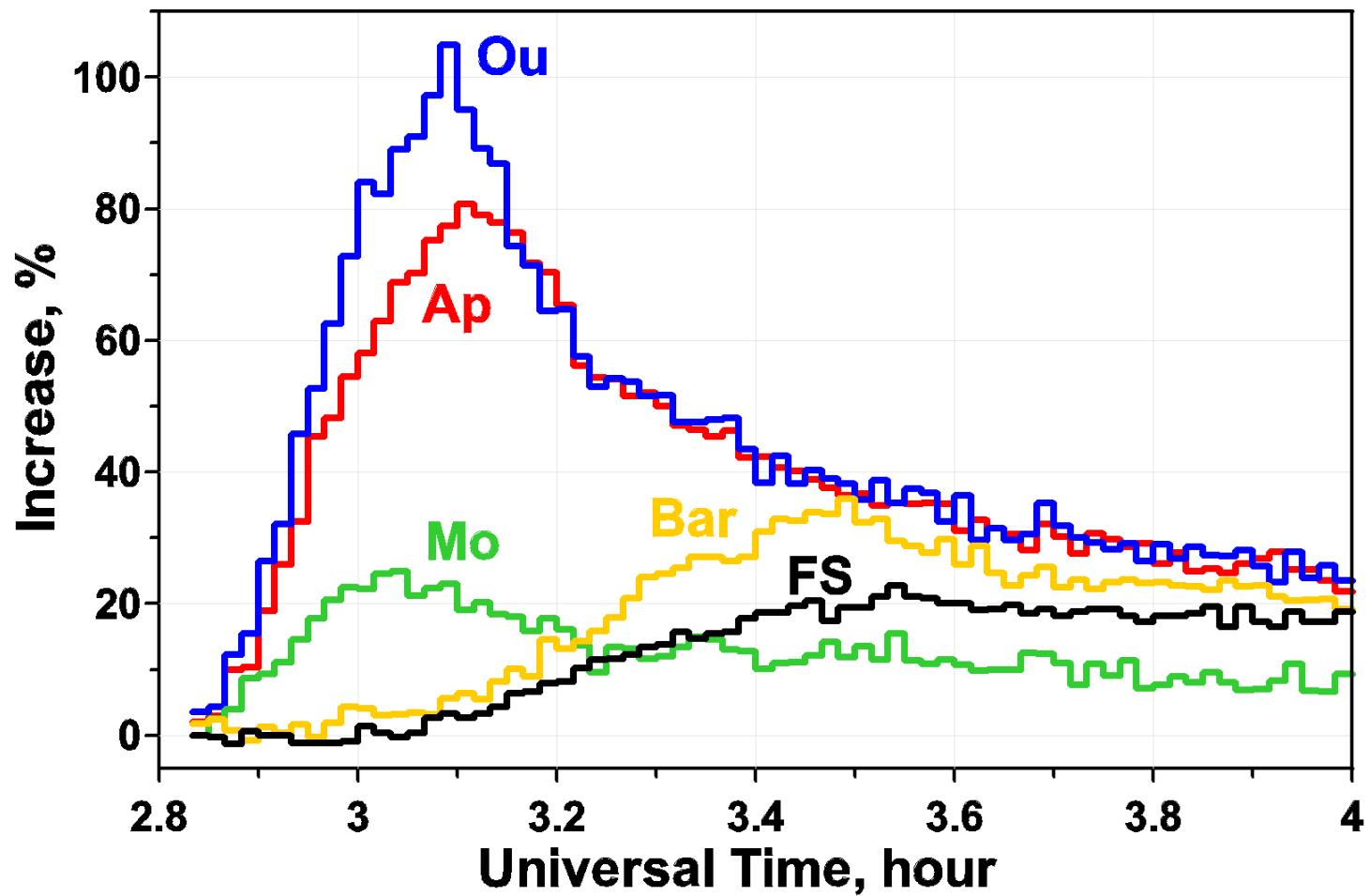
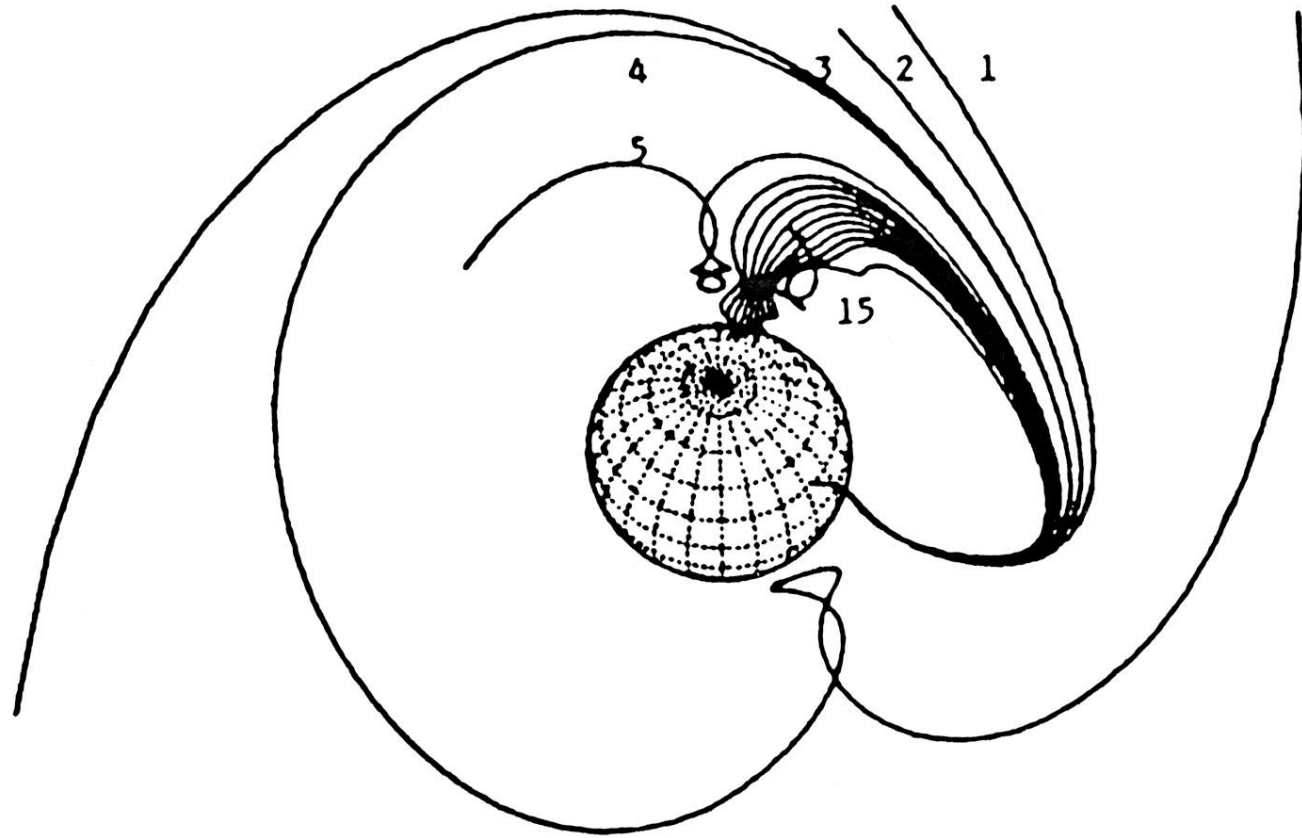


Figure 5: 2D-variations of muon flux during GLE event of December 13, 2006.

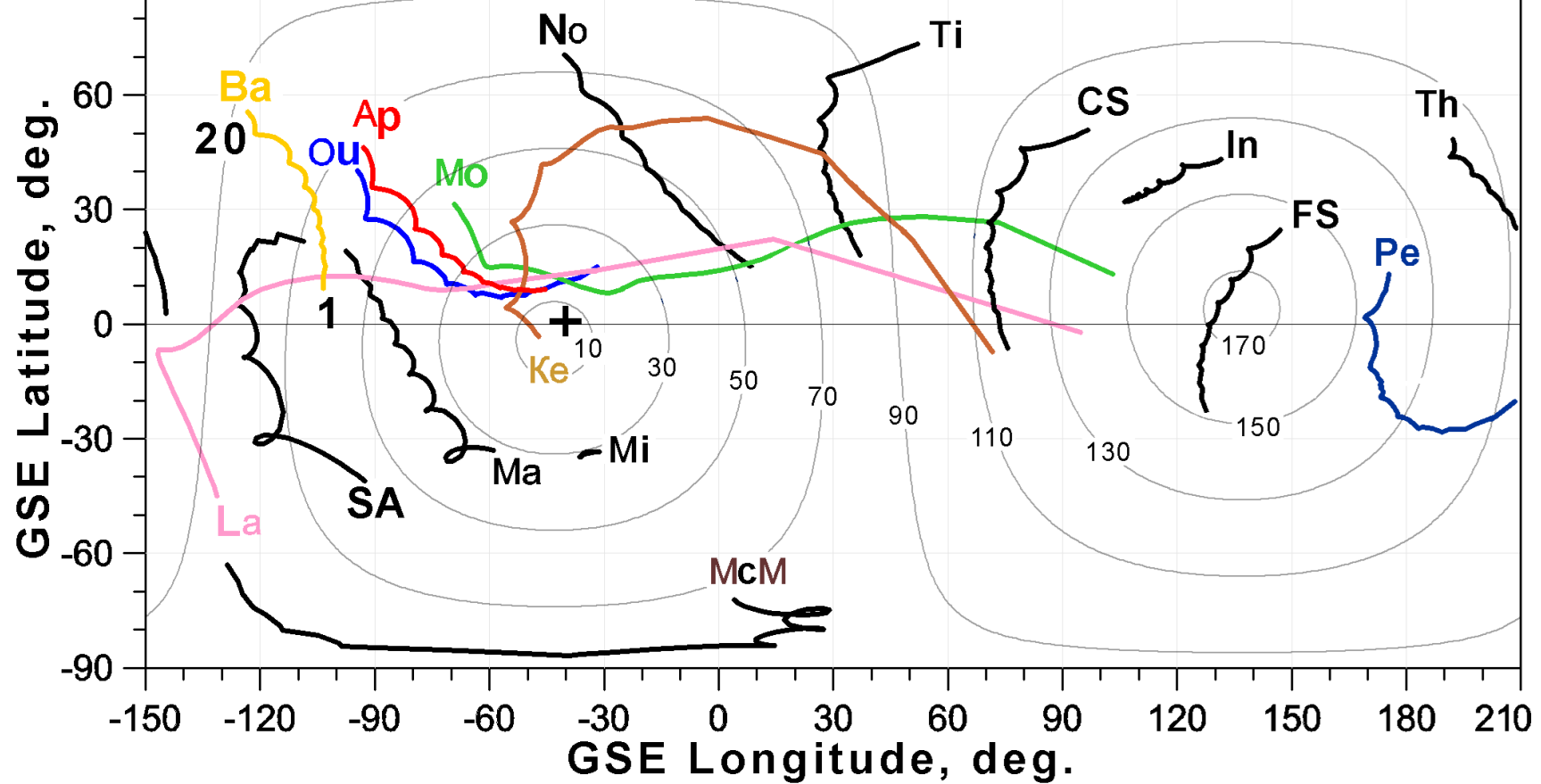
Timashkov et al., 2008
30TH INTERNATIONAL COSMIC
RAY CONFERENCE



Intensity-time profiles during the GLE 13.12.2006 at the neutron monitor stations: Ou-Oulu, Ap-Apatity, Mo-Moscow, Bar- Barentsburg, F.S- Fort Smith. (Vashenyuk et al., 2008)

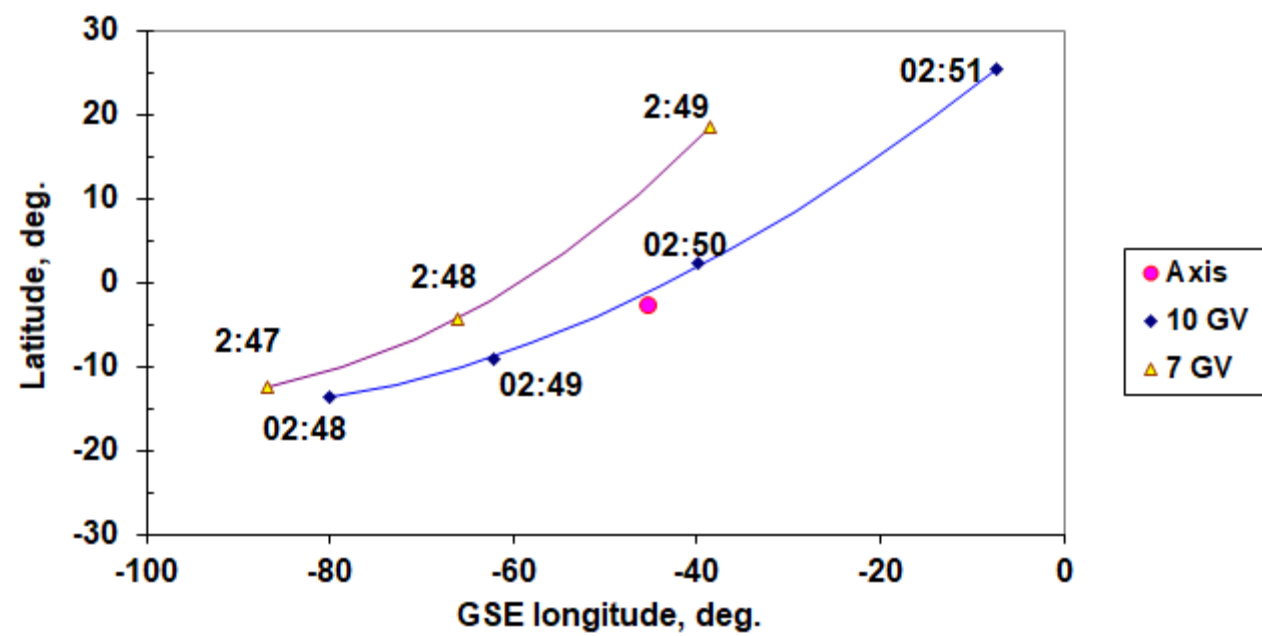


Shea



The derived anisotropy axis and pitch angle grid lines for solar proton flux at 03.00 UT. IMF direction (ACE data) is indicated by cross. The asymptotic cones (1-20 GV), the title is placed at the 20 GV end, are shown for the following NM stations: Th-Thule, Ba-Barentsburg, McM-McMurdo, Sa-SANAE, Ma-Mawson, Ou-Oulu, Ap-Apatity, Mo-Moscow, Mi-Mirny, No-Norilsk, Ti-Tixie, CS-Cape Shmidt, In-Inuvik, FS-Fort Smith, Pe-Pewanuk, Th-Thule. (Vashenyuk et al., 2008)

Time dependence of the PAMELA 10 GV viewing direction



Asymptotic directions 13.12.2006

